

CONCERT ATTIRE

Students present a professional and uniform appearance at concerts appropriate to the occasion. Attire requirements are designed to minimize attention on individuals and encourage audiences to focus on the music performed, not wardrobe choices.

Students may choose **any of these three options** to wear for their performances:

Tuxedo	<ul style="list-style-type: none">• white tuxedo shirt: clean, well-fitting, and wrinkle-free• black bow tie• black cummerbund (optional)• black tuxedo jacket• black tuxedo pants• solid black socks (no skin should be visible between pants hem and shoes when seated)• solid black, closed-toe dress shoes	No: <ul style="list-style-type: none">• colored ties or cummerbunds• white, colored, or patterned socks• jackets with tails• patterns, lace, or shiny embellishments
All black: shirt and pants	<ul style="list-style-type: none">• solid black, long-sleeve (to the wrist) shirt (button-down with collar, or with discreet neckline)• solid black, floor-length dress slacks• solid black socks or hosiery (no skin should be visible between pants hem and shoes when seated)• solid black, closed-toe dress shoes	No: <ul style="list-style-type: none">• short-sleeve or sleeveless shirts• patterns, lace, or shiny embellishments• capris, jeans, corduroys, leggings, tight or athletic pants
All black: shirt and skirt or dress	<ul style="list-style-type: none">• solid black, long-sleeve (to the wrist) shirt (button-down with collar, or with discreet neckline)• solid black, floor-length skirt• solid black socks or hosiery (no skin should be visible between pants hem and shoes when seated)• solid black, closed-toe dress shoes	No: <ul style="list-style-type: none">• short-sleeve or sleeveless shirts• patterns, lace, or shiny embellishments

If you are not properly dressed for your concert, you will be given apparel from the EYSO office to wear. **If you have doubts about whether a piece of clothing is appropriate, the best choice is not to wear it.** Please compare your clothing choices to the chart on the following page to ensure that they comply with the requirements.

The following are not allowed for any students:

Tops



No white or colored buttons



No embellishments or sparkles of any color



No lace or transparency anywhere



No colored ties or embellishments



No wide or deep necklines

Dresses Skirts Pants



Must be floor length



No embellishments or sparkles



Must be floor length



No jeans



No leggings or tight/athletic fabrics

Socks Hosiery



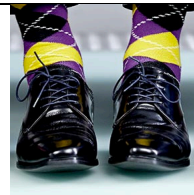
No white socks



No dots, stripes, or patterns



No lace, patterns, or transparency



No colors or patterns



No skin showing between hem and shoes

Shoes



No athletic shoes



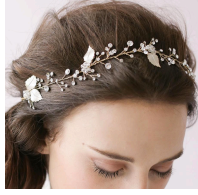
No open toes



Must be solid black



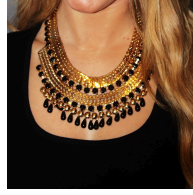
No boots

Styling

No sparkly hair accessories



No colored nail polish



No large or sparkly jewelry



No perfume, cologne, or body spray

If you have questions about concert attire that are not answered above please email the administrative office at office@eyso.org.